



SINTEF

# "Det store bildet"

## *EUs Grønne giv*

Sigurd Sagen Vildåsen

*Seniorforsker og leder for sirkulær økonomi*

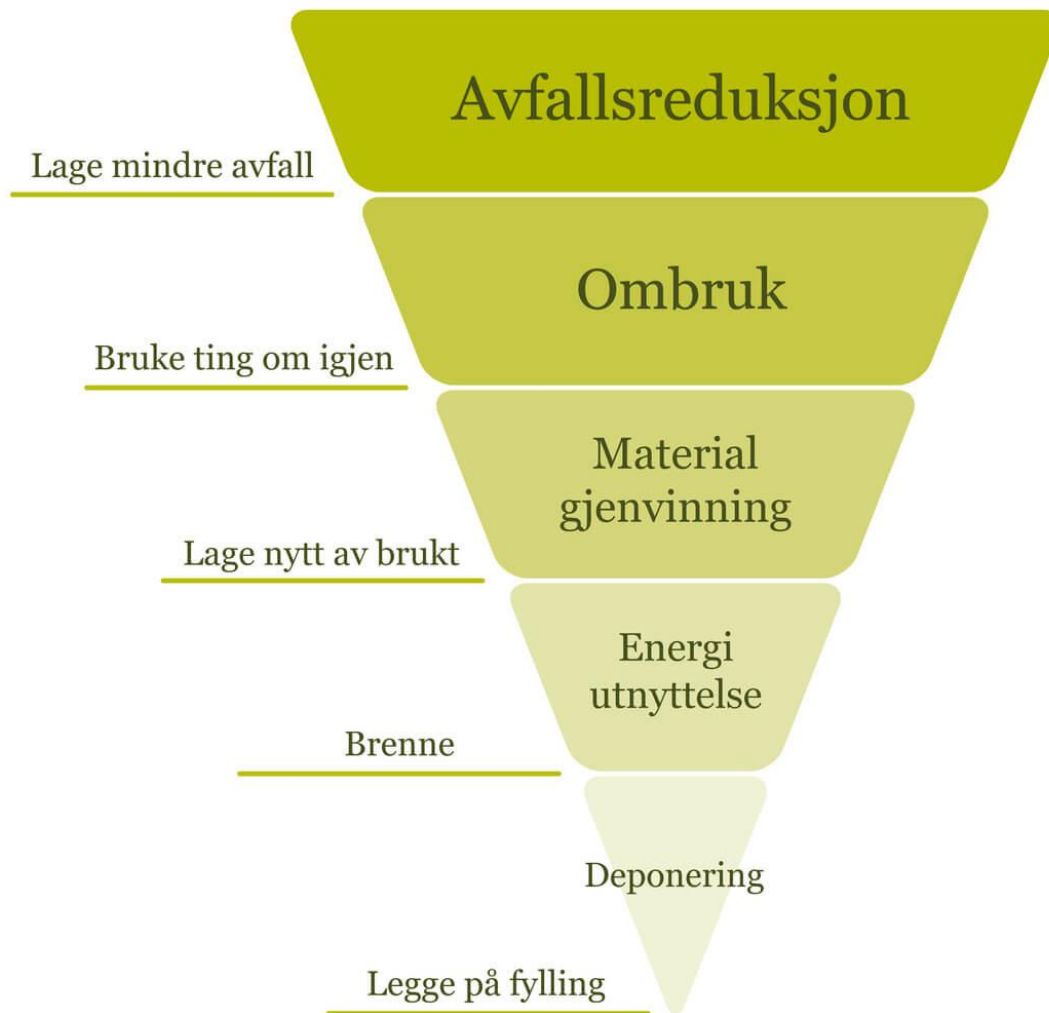
Miljøringen 22.11.23



Teknologi for et bedre samfunn

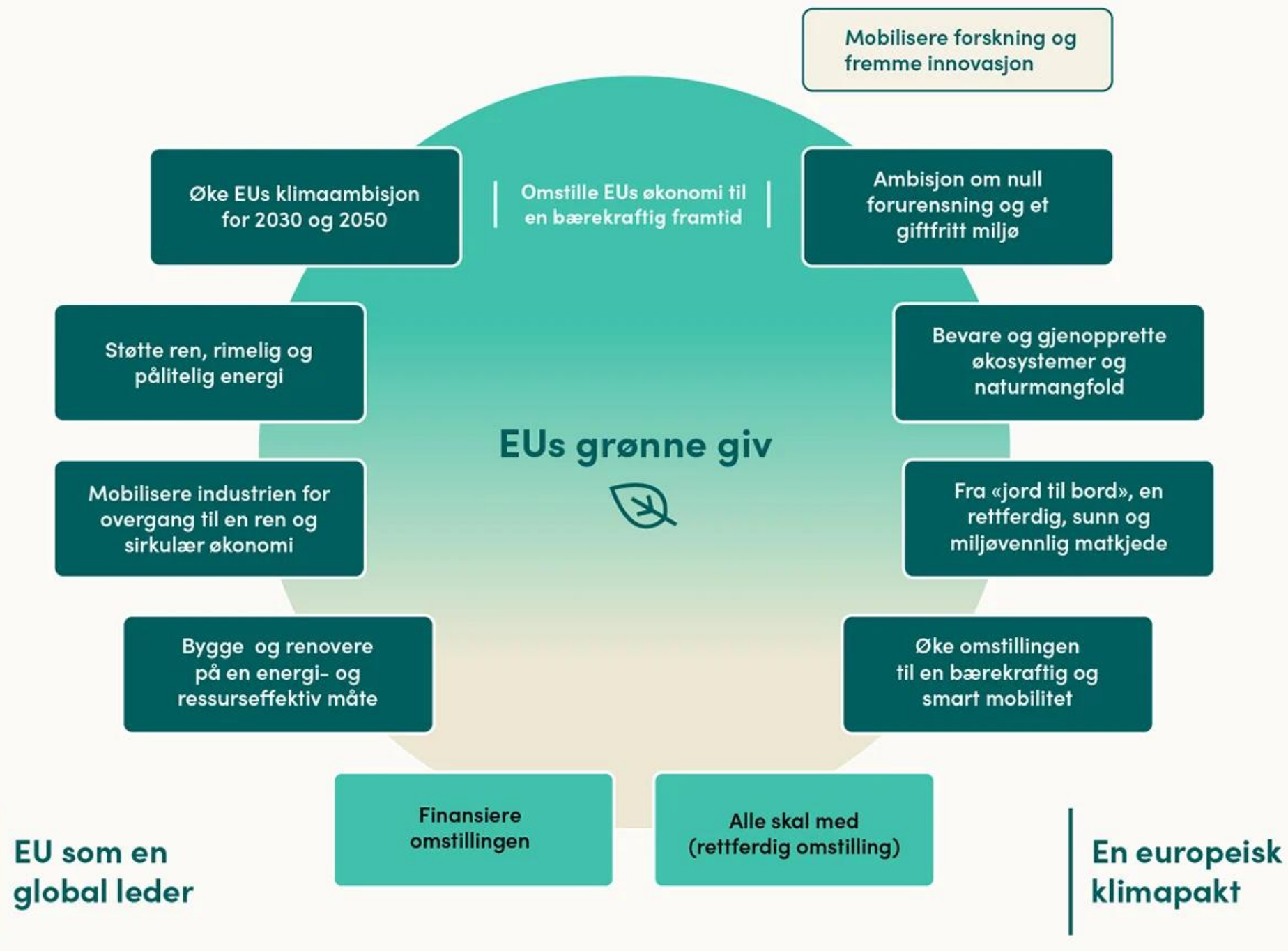


SINTEF



Figur: Avfallshierarkiet som illustrert av Retursamarbeidet LOOP (fri lisens).







Redusere og førebyggje klimagassutslepp



Klimatilpassing



Berekraftig bruk og vern av vassressursar og marine ressursar



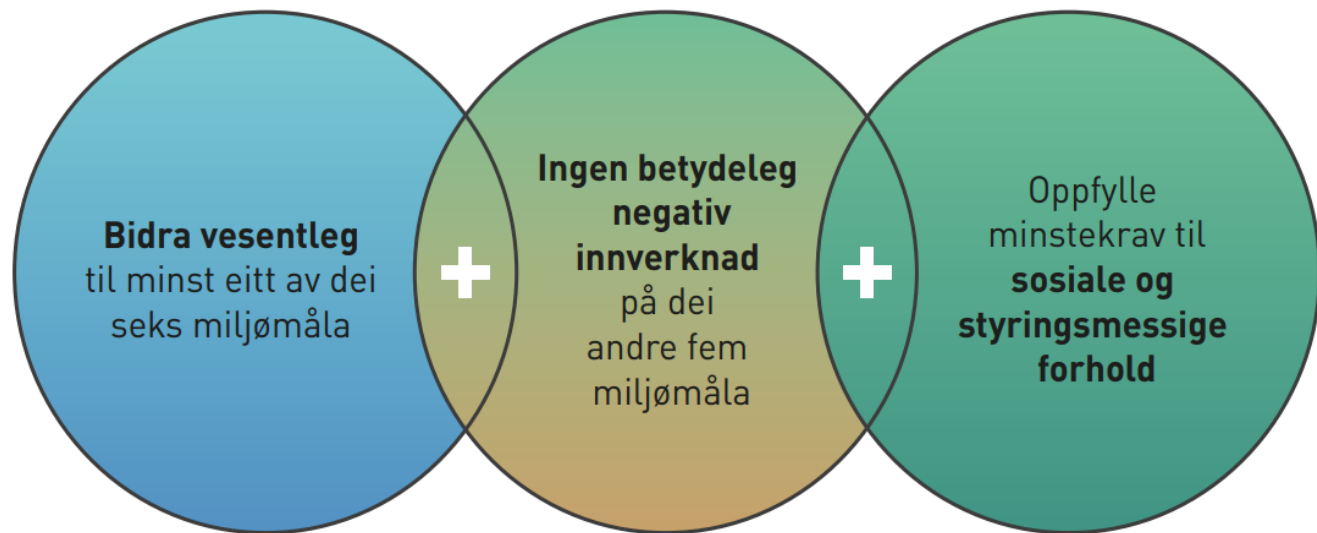
Omstilling til ein sirkulær økonomi, avfallsførebygging og attvinning



Førebygging og kontroll av forureining



Verne om og restaurere naturmangfald og økosystem



EUs klassifiseringssystem. Kjelde: EU-kommisjonen, med tilpasningar frå KLD



SINTEF



European  
Commission

# EU Taxonomy Navigator

[Home](#)[EU Taxonomy Compass](#) ▾[Activities by sector](#) ▾[EU Taxonomy Calculator](#)[FAQ](#)

[Home](#) > [EU Taxonomy Compass](#) > [EU Taxonomy Compass](#)

## EU Taxonomy Compass

---

## Construction of new buildings contribution to climate mitigation ×

Description ▾

Substantial contribution criteria ^

Do no significant harm criteria ^



SINTEF

## Do no significant harm criteria ^

Climate adaptation v

Water v

Circular economy ^

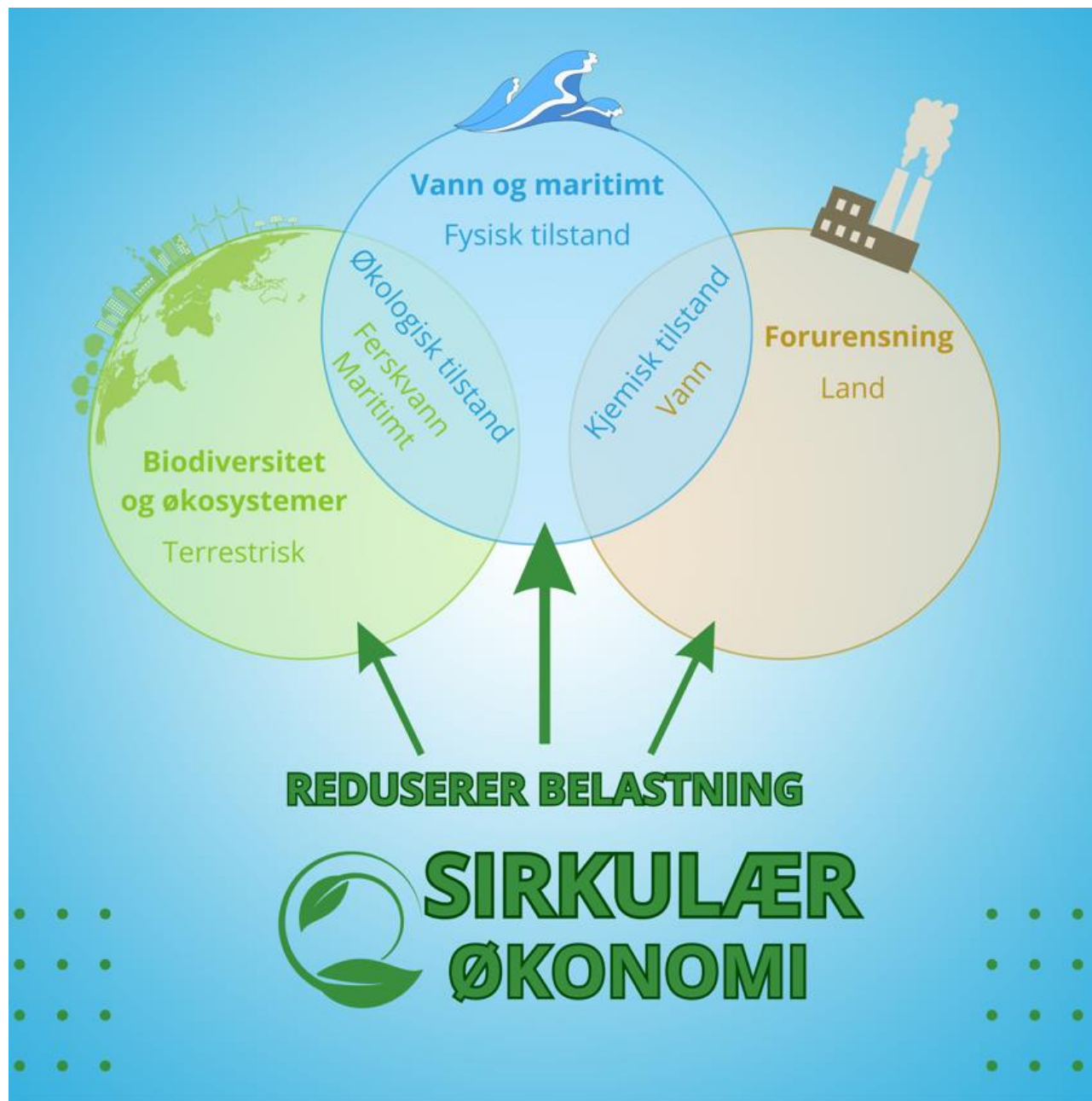
### Circular economy ^

At least 70 % (by weight) of the non-hazardous construction and demolition waste (excluding naturally occurring material referred to in category 17 05 04 in the European List of Waste established by [Decision 2000/532/EC](#)) generated on the construction site is prepared for reuse, recycling and other material recovery, including backfilling operations using waste to substitute other materials, in accordance with the waste hierarchy and the EU Construction and Demolition Waste Management Protocol<sup>(296)</sup>. Operators limit waste generation in processes related to construction and demolition, in accordance with the EU Construction and Demolition Waste Management Protocol and taking into account best available techniques and using selective demolition to enable removal and safe handling of hazardous substances and facilitate reuse and high-quality recycling by selective removal of materials, using available sorting systems for construction and demolition waste.





SINTEF





SINTEF

Teknologi for et bedre samfunn